

Emma Safety Footwear B.V.
Attn Ronny van der Wegen
Product Development Manager
Tunnelweg 104
6468 EK Kerkrade
The Netherlands

Date
19-01-2020

Contact
rob.de.jonge@nl.tuv.com

Reference number
89209363-002

Concerns:
Insoles

Dear Mr Van der Wegen,

TÜV Rheinland Nederland B.V. hereby declares that personalised inlay soles produced with HYDRO-TEC ORTHO COVER covering material provided by EMMA Safety Footwear may be manufactured by Podiatrists, Podologists and the Orthopaedic shoe technician. On condition that they meet the following conditions;

1. the insoles meet all the conditions indicated in the document " Work instructions Ortho Covers " with document number: F 220, version 8 dated 19 January 2020.
2. TÜV Rheinland Nederland B.V. performs an annual Factory Product Control "FPC audit" at Emma Safety Footwear to verify the production control;
3. changes made to the instructions are submitted for approval to TÜV Rheinland Nederland B.V. prior to introduction.

Only if these conditions are fulfilled shall the EMMA Safety Footwear certificates indicated in the work instruction document F 220 remain valid.

Warm regards,


Rob de Jonge
Managing Director TÜV Rheinland Nederland B.V.

Annexes:
EN_F220 Work instructions Ortho Covers V7 20181001



Date 1st issue : 15-06-2016

Date version 8 : 19-01-2020

Work instruction for the manufacturing of a personalized inlay sole by Podiatrists, Podologists and Orthopaedic shoe technician

This work instruction contains all relevant information for podiatrists, podologists and Orthopaedic shoe technicians to manufacture a personalized inlay sole while maintaining the **EN-ISO-20345:2011** and **EN ISO 20347:2012** standards, which are in conformity with the provisions of Council Directive 89/686/EEC*96/58/EC for personal protective equipment (PPE) till the expiry date of the concerned certificate. Emma Safety Footwear shoes with a certificate expiring date in the period between April 21st 2018 and April 21st 2019, will be extended and converted to comply with the European Regulation 2016/425. This instruction is to be exclusively used in combination with already certified **EMMA Safety Footwear** products. The up-to-date work instruction can be retrieved from the Emma website as a downloadable PDF under document F220.

Chapters:

- 1- **Guaranteeing certification and overview of certifications**
- 2- **Work instruction/action plan**
- 3- **Maintenance of safety standard procedure**

1. Guaranteeing certification

If the standard inlay sole of an Emma safety shoe is removed and replaced by a regular or personalized inlay sole, the EN standard no longer applies. To offer a suitable solution, you can make use of the following production method guaranteeing the maintenance of certification. It is important that you carry out this instruction and procedure completely and correctly. The use of the HYDRO-TEC® ORTHO COVER material guarantees the right moisture regulation, wear resistance, electrostatic discharge, insulation and extra space below the toe cap after impact or compression.

With this instruction, the entire EMMA Safety Footwear collection can be used while maintaining the following Certifications whose latest version of certificate and / or declaration of conformity can be requested at EMMA Safety Footwear:

- | | |
|---|---------------------------------|
| - GRIPFORCE EASY TWIST OCCUPATIONAL | Certificate number : 26290.01 |
| - GRIPFORCE EASY TWIST (INCL XXD) | Certificate number : 26290.02 |
| - GRIPFORCE DUO | Certificate number : 26290.03 |
| - GRIPFORCE EASY TWIST ESD (INCL SNEAKER) | Certificate number : 26290.04 |
| - ATHLETIC | Certificate number : 2777/12346 |
| - LADIES LINE | Certificate number : 2777/12347 |
| - FRONTIER | Certificate number : 4600727.02 |
| - OFFICE LINE | Certificate number : 9645-1 |
| - OCCUPATIONAL OFFICE | Certificate number : 10275 |
| - SOVS SEMI ORTHOPAEDIC SAFETY SHOE | Certificate number : 26291.01 |

2. Work instruction/action plan

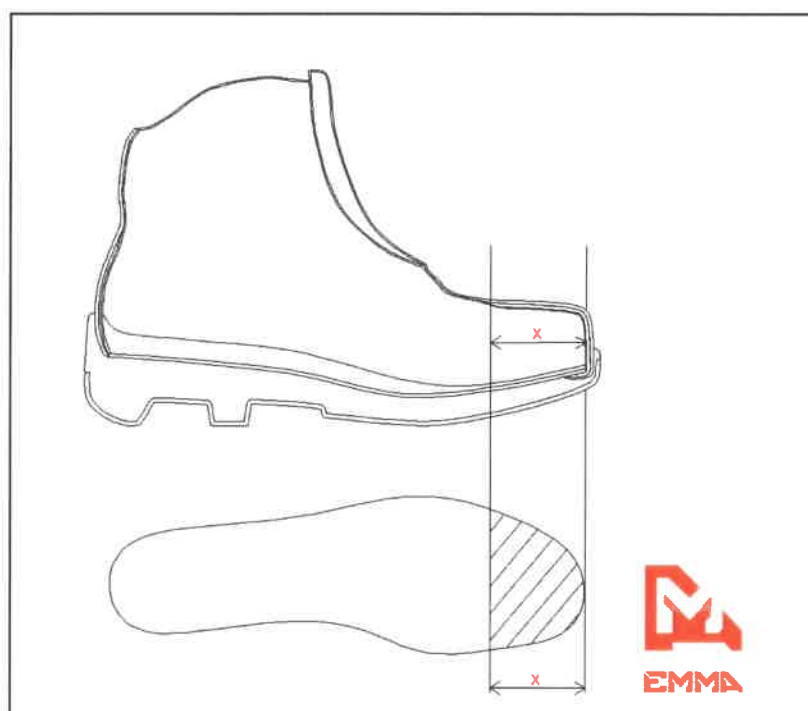
Step 1

Manufacture a personalized inlay sole according to your own method, using the materials of your choice on the inner sole pattern of the desired Emma safety shoe. Inner sole patterns are for sale on www.frecoma.nl or can be downloaded for free on the Emma website.

Step 2

Construct the personalized inlay sole using your materials in such a way that the EMMA cover material HYDRO-TEC® ORTHO COVER completely covers the personalized inlay sole and that part X (image 1) consists only of the EMMA cover material HYDRO-TEC® ORTHO COVER.

Image 1:



Length X per size =

- Size 35/36 X = ≥ 58 mm
- Size 37/38 X = ≥ 61 mm
- Size 39/40 X = ≥ 65 mm
- Size 41/42 X = ≥ 68 mm
- Size 43/44 X = ≥ 72 mm
- Size 45/46 X = ≥ 75 mm
- Size 47/53 X = ≥ 79 mm

Note: This construction is necessary in order to guarantee the minimum space below the toe cap as well as the electrostatic discharge.

Step 3

Cover the personalized inlay sole with the purchased HYDRO-TEC® ORTHO COVER material.

Step 4

With permanent marker, write the unique code you have received on the bottom of the inlay sole (see chapter 3 Maintenance of safety standard procedure).

3. Maintenance of safety standard procedure

To make the personalized inlay sole produced by you part of the certified Emma safety shoe, it is necessary to register this inlay sole. On the HYDRO-TEC® ORTHO COVER packaging you will find a unique 6-digit code which must be submitted upon registration. Registration takes place via the website of Emma Safety Footwear:

<http://www.emmasafetyfootwear.com/orthopedic/support-soles-amp-supplements>

After registration, you will receive an email confirmation for your own records.

The unique code must also be written on the bottom of the inlay sole with permanent marker, as described in the work instruction step 4.