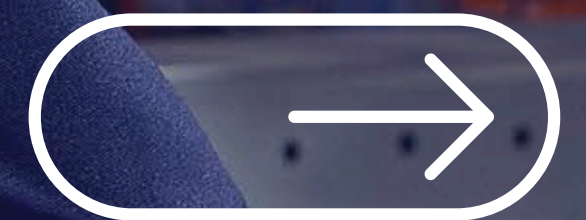




EMMA'S
TOP 5 FOR THE

LIGHT INDUSTRY



ESD-APPROVED, AGILE,
SPORTY, AND WITH
ULTIMATE GRIP

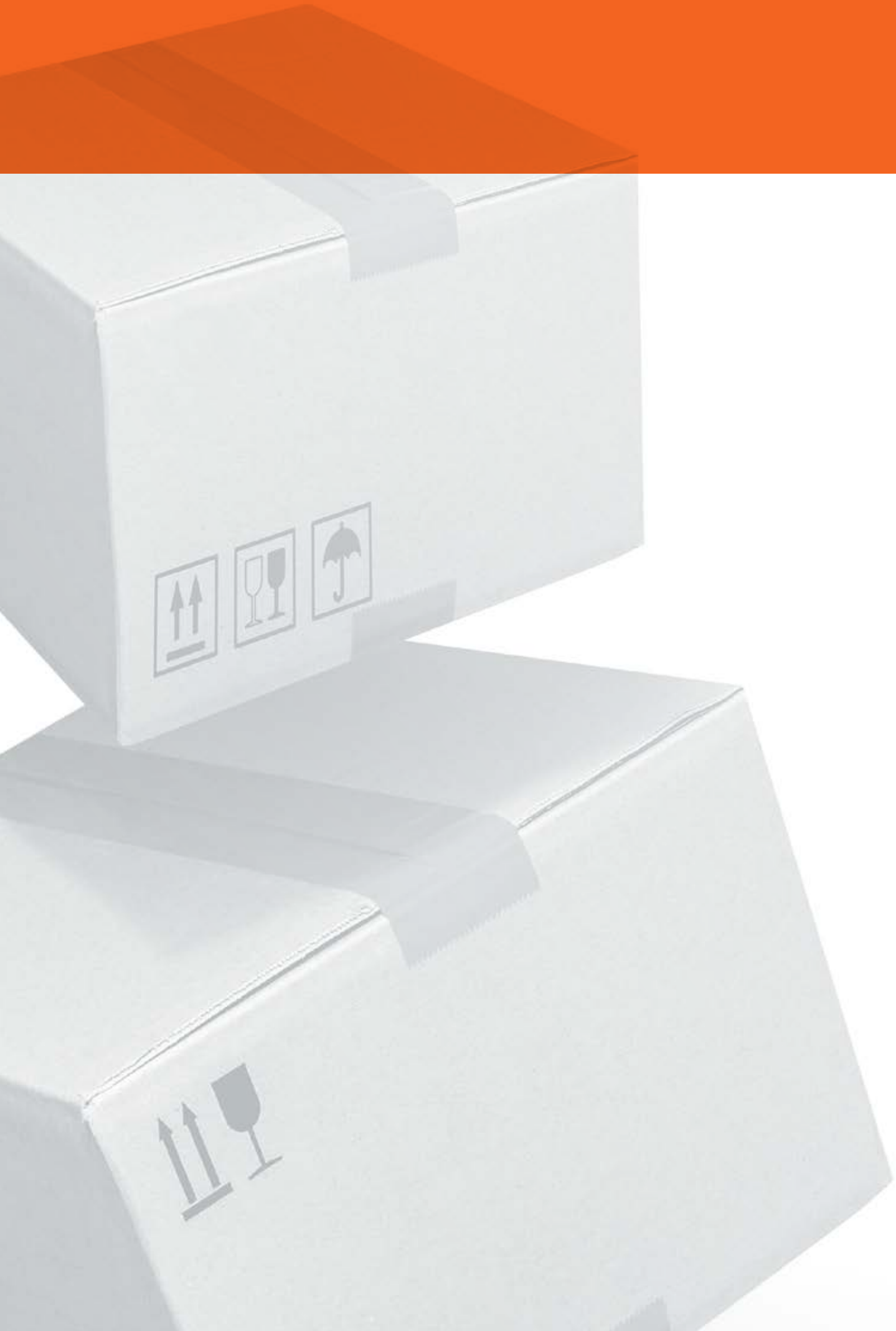


**SPORTY, COMFORTABLE
SAFETY SHOE**

**LIGHTWEIGHT DUE TO
TEXTILE UPPER AND NANO
CARBON TOE CAP**

AIRBAG IN THE OUTSOLE

BOSTON





CROSSFORCE FLY LOW



METAL-FREE

WITH SCUFFCAP FOR LONGER DURABILITY

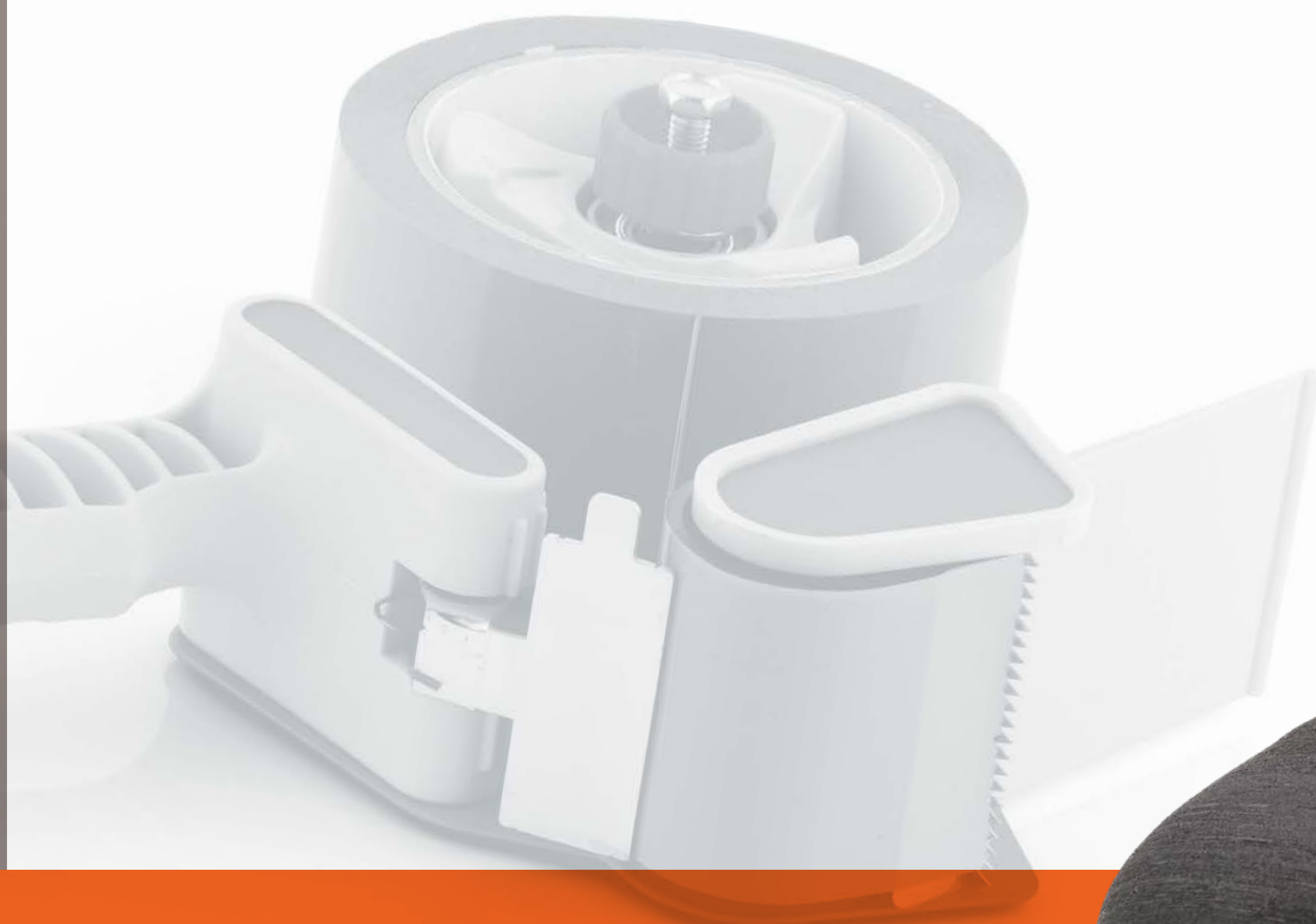
HIGH WEARING COMFORT THANKS TO
FEATHERLIGHT MATERIALS AND A SOFT INSOLE

**ULTIMATE GRIP THROUGH
FRAMEWORK PU OUTSOLE**

ESPECIALLY FOR WOMEN,
THANKS TO THE USE OF A
WOMEN'S SHOE LAST
BREATHABLE HYDRO-TEC®
LINING FOR FRESH FEET
GRIPFORCE® EASY TWIST
LADIES' OUTSOLE FOR
MAXIMUM GRIP

JESS





CLYDE



STRONG SHOCK-ABSORBING SOLES
AND A SPECIAL HEEL CONSTRUCTION
**DENIMX LACES MADE FROM
RECYCLED JEANS**
METAL-FREE

ALSO AVAILABLE AS A LOW MODEL

**METAL-FREE WITH A
FIBERGLASS TOE CAP**
**ONE OF EMMA'S MOST
BREATHABLE SHOES**
VELCRO FASTENERS FOR
QUICK ON AND OFF

DAYTONA





EMMA SAFETY FOOTWEAR