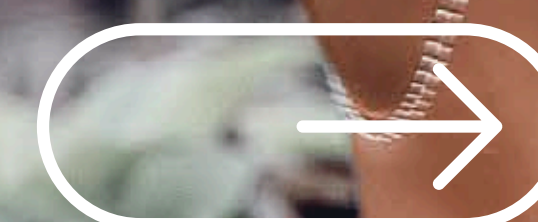




EMMA'S  
TOP 4

# SAFETY BOOTS

READY FOR RAIN,  
COLD, ICING  
AND SNOW!





# MENTO

WATER-REPELLENT FOR UP TO FOUR HOURS

**DOUBLE-LAYERED PU SOLE,  
REINFORCED WITH A STEEL PLATE**

**MADE OF FULL-GRAIN LEATHER**

FRESH FEET THANKS TO THE  
HYDRO-TEC® TECHNOLOGY

# GALUS

NITRILE SOLE THAT CAN  
RESIST EXTREME HEAT

**100% SHEEPSKIN LINING**

UNIQUE FOR ITS ZIP

**UPPERS MADE OF**

**FULL-GRAIN LEATHER**





**CLIMATE NEUTRAL CERTIFIED**

LINED WITH SHEEPSKIN:  
WARM AND COMFORTABLE

**WATER-REPELLENT,  
SO ALWAYS DRY FEET**

WITH A RESILIENT GRIPFORCE®  
EASY TWIST SOLE

**MERULA**



- ✓ Footprint
- ✓ Reduction
- ✓ Compensation

[www.cn-cert.com](http://www.cn-cert.com)

WATERPROOF FOR HOURS  
MOISTURE-WICKING  
AND BREATHABLE,  
WATERPROOF MEMBRANE  
**INDESTRUCTIBLE**  
SUITABLE FOR TOUGH  
OUTDOOR JOBS

**MENDOZA**





**EMMA** SAFETY FOOTWEAR